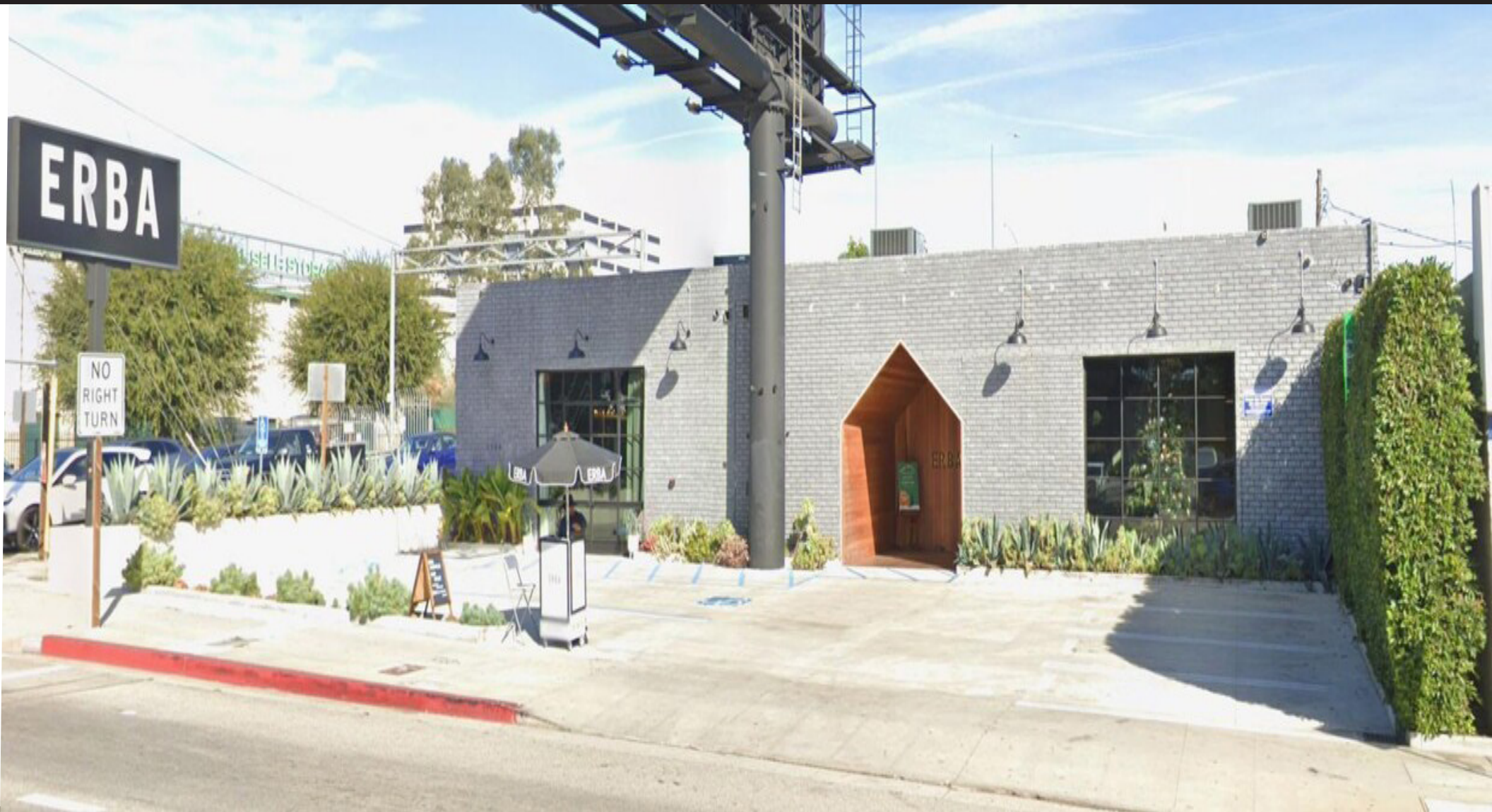


# 2304 Sawtelle Blvd

Los Angeles, CA 90064

RETAIL FOR RENT



Brandon Cohan  
Brandon Zarrabi

| brandon@bcre.la  
| zarrabi@bcre.la

| 310.654.0200  
| 310.492.3597



**BRANDON COHAN**  
REAL ESTATE // BCRE.LA



Second Generation Retail Space  
OVER 8,000 SF ON SAWTELLE  
24-7 DRIVE BY TRAFFIC  
SPACE IS READY FOR ANY AND ALL NEEDS

FLORACAL  
FARMS

CRESCO  
HIGH SUPPLY



STYLISH

Big Green

FLORACAL  
FARMS



# 2304 Sawtelle Blvd

Los Angeles, CA 90048



Brandon Cohan  
Brandon Zarrabi

| brandon@bcre.la  
| zarrabi@bcre.la

| 310.654.0200  
| 310.492.3597

**BC** **BRANDON COHAN**  
REAL ESTATE // BCRE.LA